

Specimens collected on the campus of the University of California from *Phlox subulata*, on March 8, 21, 23 and 28, 1938. Holotype, alate viviparous female, No. 4846, C.A.S., Ent. Paratypes, 41 slides in the collections of Professor E. O. Essig and the author.

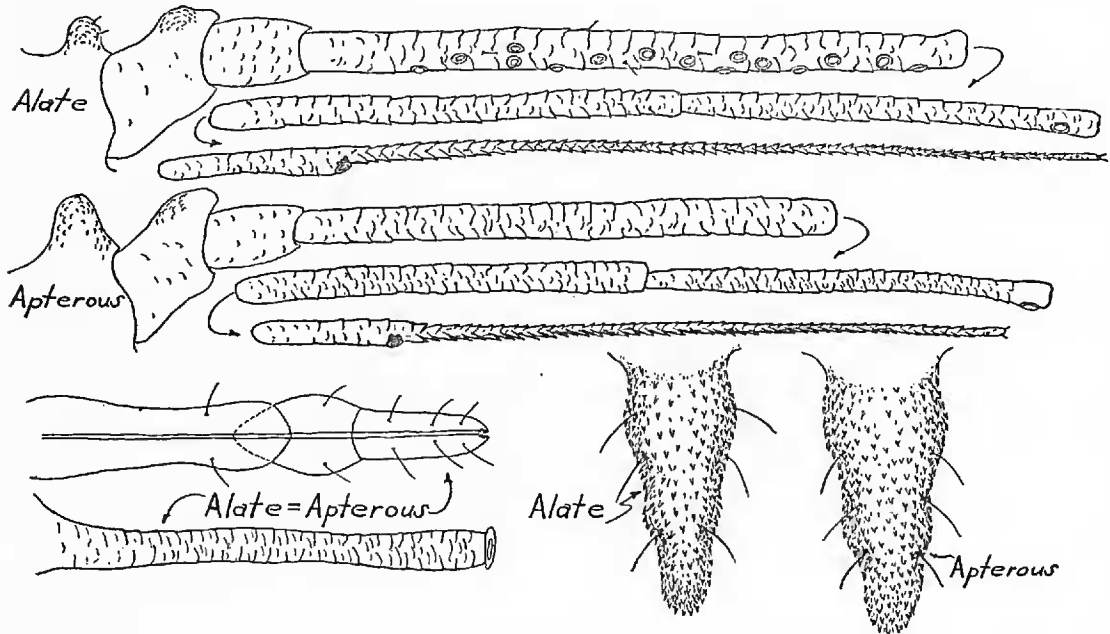


Fig. 1 *Phorodon phloxæ* Sampson

This species appears to be related in some degree to *Ph. menthæ*, from which it differs in having a smaller number of sensoria on the third and fourth antennal segments, in the shorter rostrum, and in the shape of the cornicles. The projecting process on antennal I is less strong in *Ph. phloxæ* than in *Ph. menthæ*; the projection of the frontal tubercles is also less strong.

## A CONTRIBUTION TO THE KNOWLEDGE OF THE APHIDIDÆ OF NEVADA

BY E. A. DREWS

*University of California, Berkeley*

A review of the literature reveals but few references to the aphids of Nevada. It seems that the first paper on the aphids occurring in Nevada was of an economic nature (Hillman, 1890) wherein he recorded some species found on apple. In the present paper the few previously known species are listed together with their hosts and other data, and a number of new records from the writer's personal collecting, particularly from western Nevada, have been added. Genera and species are alphabetically arranged.

Judging from published records and personal observation it would appear that species of this family are less abundant in Nevada than in other states.

*Aphis cardui* Linn. Dayton, Nevada, May 31, 1938. Collected on thistle, mostly on the tip of the plant.

*Aphis filifoliae* Gillette and Palmer. Holbrook, Nevada, October 13, 1938. Taken on *Artemesia tridentata* sparingly. Attended by ants.

*Aphis hilechrysi* Kalt. Recorded from Nevada by Essig (p. 236 1926).

*Aphis incognita* Hottes and Frison. Holbrook, Nevada, August 1938. Taken on *Symphoricarpos rotundifolius*.

*Aphis pomi* DeGeer. Recorded from Nevada on apple as *Aphis mali* by Hillman (1890).

*Aphis rosea* (Baker). Recorded from Nevada on apple as *Aphis malifoliae* by Hillman (1890).

*Amphorophora nervata* (Gillette). Idlewild Park, Reno, Nevada, May 20, 1938. Abundant on cultivated rose. Taken later on wild rose, Holbrook, Nevada, May 31, 1938.

*Brevicoryne brassicae* Linn. Recorded on cabbage by Hillman (1897) as *Aphis brassicae*. Also collected by the author about 15 miles south of Yerington, Nevada, along the West Walker River, September 26, 1938, on *Cleome lutea*.

*Capitophorus ribis* (Linnaeus). Recorded on currant by Hillman (1897). Collected by the writer approximately 15 miles south of Yerington, Nevada, along the West Walker River, September 26, 1938, on *Ribis aureum*. Males present.

*Capitophorus rosae* (Linnaeus). Holbrook, Nevada. May 31, 1938. On wild rose.

*Cinara edulis* (Wilson). Taken near Gardnerville, Nevada, October 13, 1938. On one tree observed, eggs were so abundant upon the needles that the tree appeared black rather than green.

*Clavigerus bicolor* (Oestlund). Collected on willow at Holbrook, Nevada, May 31, 1938. Not common.

*Clavigerus smithiae* (Monell). Collected at Idlewild Park, Reno, Nevada, May 20, 1938. Not plentiful on the stems of willow.

- Eriosoma lanigerum* (Hausemann). Recorded from apple by Hillman (1890) (1892) as *Schizoneura lanigerum*. Also collected by the writer on the Highway Building Grounds, Carson City, Nevada, June 1938, on elm.
- Essigella californica* (Essig). Found near Minden, Nevada, June 1937, on pinon pine. Not common.
- Euceraphis gillettei* (Davidson). Collected at Spooner, Nevada, June 1938, on *Alnus* sp.
- Fullawaya saliciradicis* Essig. Found at Holbrook, Nevada, May 31, 1938, on the base of willow. Attended by a large red ant which placed a considerable quantity of soil, leaves and other material about the aphids, covering them completely. Insofar as is now known this is the third collection of this species, previous records being from Colorado. Apterous forms only.
- Lachnus rosæ* Cholodkovsky. Collected along the West Walker River near Yerington, Nevada, September 26, 1938. Abundant but very spotted in distribution on wild rose.
- Lachnus salignus* (Gmelin). Collected at Wellington, Nevada, along the West Walker River, September 26, 1938, on *Salix* sp.
- Macrosiphum atripes* Gillette and Palmer. Taken at Holbrook, Nevada, October 13, 1938, on *Aster canescens*.
- Macrosiphum creelii* Davis. Recorded from Lovelock and Fernley, Nevada, by Davis (1914). Host: Alfalfa.
- Macrosiphum pisi* (Kaltenbach). Recorded from Minden and Fallon, Nevada, as *Illinois pisi* by the Nevada Agricultural Experiment Station (1934). On alfalfa.
- Macrosiphum rosæ* (Linn.). Recorded by Hillman (1897) as *Aphis* sp. on rose. This is undoubtedly the species Hillman meant from the description he gave. Also collected by the writer at Idlewild Park, Reno, Nevada, May 20, 1938, on cultivated roses and at Holbrook, Nevada, May 31, 1938, on wild rose.
- Macrosiphum solanifolii* (Ashmead). Collected at Holbrook, Nevada, May 31, 1938. Abundant on the tips of nettle. Also collected sparingly on Honey Locust, Carson City, Nevada, June 1938.

- Mordwilkoja vagabunda* (Walsh). Recorded from Nevada by Essig (p. 259, 1926). Hosts listed are poplar, aspen and cottonwood.
- Myzocallis ulmifolii* (Monell). Taken on the grounds of the old U. S. Mint Building, Carson City, Nevada, June 1938. Very abundant on Elm.
- Myzus cerasi* (Fabricius). Recorded from Nevada by Essig (p. 251, 1926), on Sweet Cherry.
- Myzus persicæ* (Sulzer). Taken near Yerington, Nevada, September 26, 1938, on *Cleome lutea*.
- Pemphigus populi-transversus* Riley. Recorded by Hillman (1897) as *Pemphigus* sp. on poplar. Collected by the writer along U. S. Highway 50, Lake Tahoe, Nevada, July 1937, and at Lake Topaz, Nevada, June 1938, on poplar.
- Rhopalosiphum prunifoliæ* (Fitch). Recorded from Nevada on apple by Hillman (1897) as *Aphis prunifoliæ*. Collected by the author in Idlewild Park, Reno, Nevada, May 20, 1938, on the same host.
- Tamalia coweni* (Cockerell). Recorded from Nevada by Essig (p. 231, 1926), on manzanita.
- Toxoptera graminum* (Rondani). Recorded from eastern central Nevada by Webster and Phillips (1912) on wheat.

## LITERATURE CITED

- Davis, J. J., 1914. New or little-known species of Aphididæ. Canadian Entomologist, 46:41, 47.
- Essig, E. O., 1926. Insects of Western North America. 1035 pp. The Macmillan Company, New York City.
- Hillman, F. H., 1890. Plant-lice infesting the apple. Nevada Agricultural Experiment Station Bull., 11:1-7.
- 1892. Woolly Aphis of the apple. Nevada Agricultural Experiment Station Bull., 17:1-8.
- 1897. Some common injurious insects of Western Nevada. Nevada Agricultural Experiment Station Bull., 36:1-17.
- Nevada Agricultural Experiment Station, 1934. Annual report for the fiscal year ending June 30, 1934. University of Nevada, Agricultural Experiment Station, p. 55.
- Webster, F. M. and W. J. Phillips, 1912. The spring grain-aphis or "Green-Bug." Bur. Ent., U. S. D. A. Bull., 110:19.